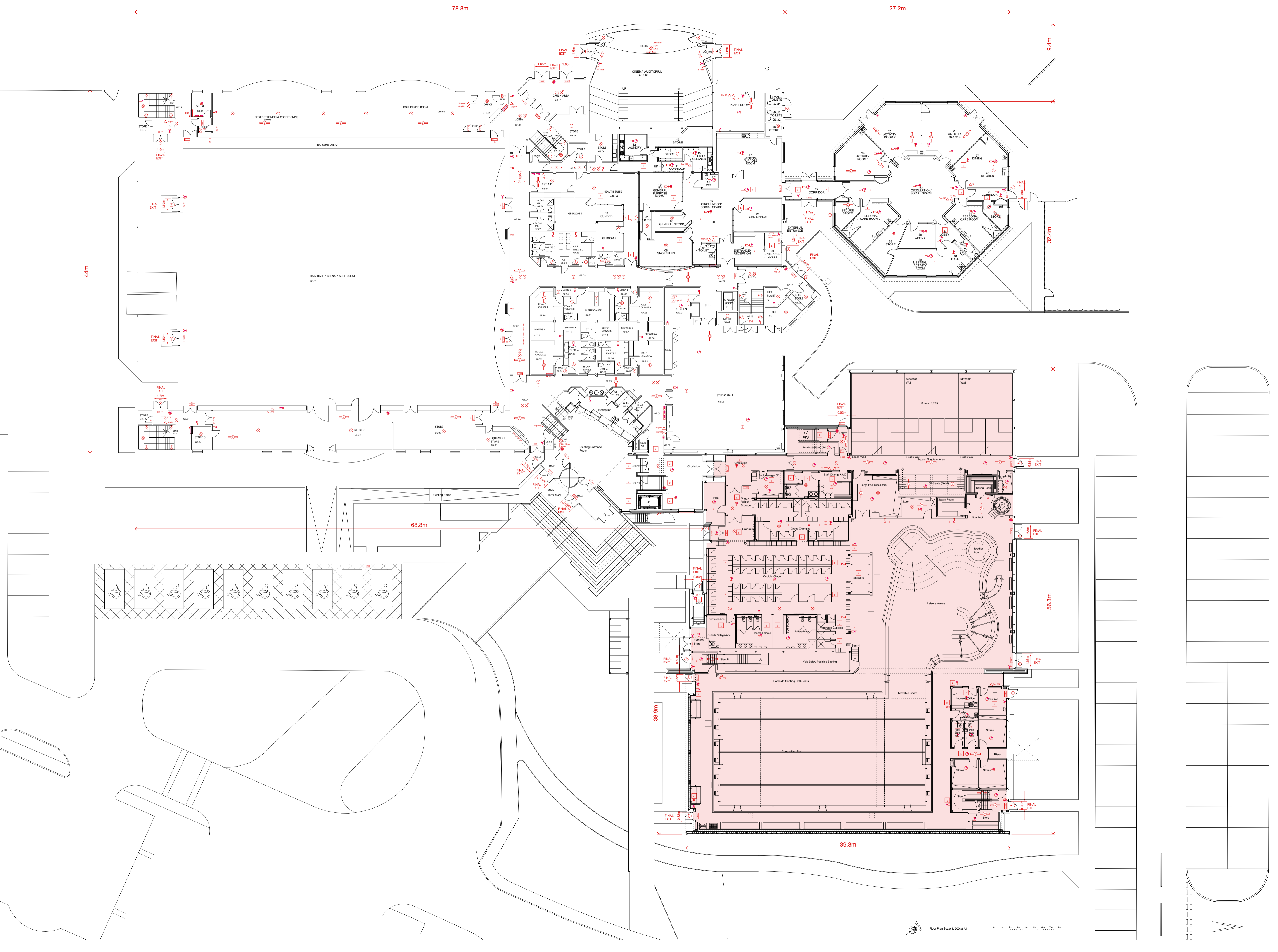


# The Pickaquoy Centre Trust Site Plan



- KEY**
- ELECTRICAL SUB-BOARDS
  - FIRE APPLIANCE
  - FIRE HOSE REEL
  - EMERGENCY FLOOD LIGHTS
  - EMERGENCY LIGHTS
  - HEATSTROKE DETECTOR
  - SMOKE DETECTOR
  - SMOKE DETECTOR - CEILING VOID
  - ALARM SOUNDER
  - HANDHELD FIRE EXTINGUISHER
  - BREAK GLASS CALL POINT
  - EMERGENCY EXIT ILLUMINATED SIGN
  - EMERGENCY EXIT LUMINESCENT TYPE
- NOTE: SWIMMING POOL VIDEO IS PROTECTED BY AUTOMATIC SPRINKLER SYSTEM
- AREA NOT INCLUDED IN LICENSE

REVISIONS

Project  
**THE PICKAQUO CENTRE**

Title  
**ALCOHOL LICENCE  
GROUND FLOOR  
PLAN**

Project No.	401313	Drawing No.	1
Revision		Drawn	
Project	26/02/18	Drawn	JG
Date	2013	Checked	
Scale	1:200 at A1	Checked	

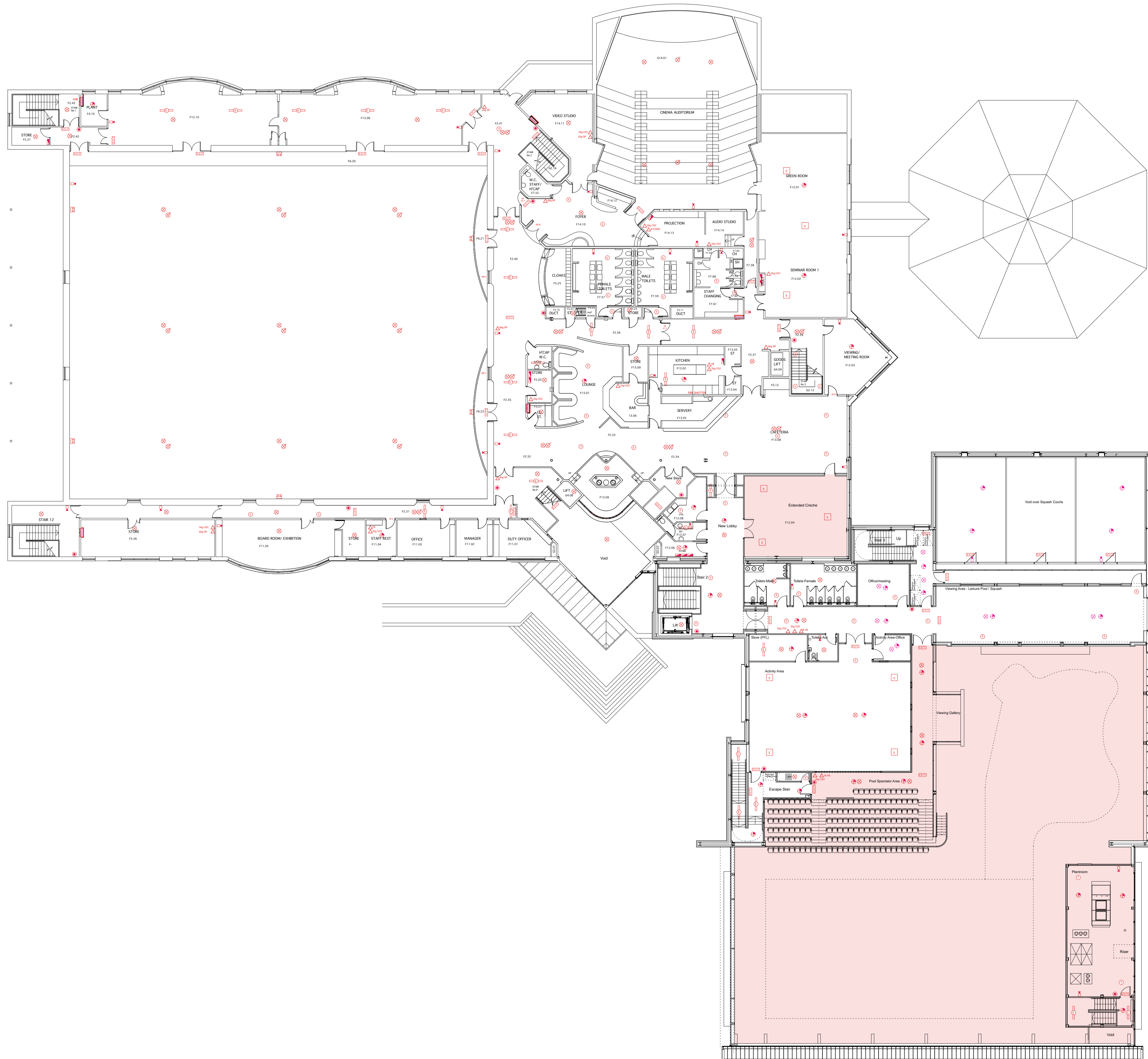
All drawings to be checked on site before work and the modification of drawings on-site.

This drawing is not to be scaled.

© Information contained within this drawing is copyright of Orkney Council.

DEVELOPMENT AND INFRASTRUCTURE  
Council Office, Victoria  
Glenelg, PERTH, N.Y.  
Tel: 01753 877000  
www.orkney.gov.uk

**ORKNEY**  
Council Office - Glenelg, Perth, N.Y.



- KEY**
- ELECTRICAL SUB-BOARDS
  - FIRE APPLIANCE
  - FIRE HOSE REEL
  - ALARM SOUNDER
  - EMERGENCY FLOOR LIGHTS
  - EMERGENCY LIGHTS
  - HEAT DETECTOR
  - SMOKE DETECTOR
  - SMOKE DETECTOR IN CEILING VOID
  - WIRELESS DOOR & WINDOW CALLERS
  - SMOKE GLASS CALL POINT
  - EMERGENCY EXIT ILLUMINATED SIGN
- NOTE: SWIMMING POOL WING IS PROTECTED BY AUTOMATIC SPRINKLER SYSTEM
- AREA NOT INCLUDED IN LICENSE

REVISIONS

Project  
**THE PICKAQUOY CENTRE**

Title  
**ALCOHOL LICENCE FIRST FLOOR PLAN**

Revision	401313	Drawing No.	2
Date	14/02/18	Drawn	JG
Scale	1:200 at A1	Checked	

All drawings to be checked on site before work and the manufacturer of fixtures conforms.

© Information contained within this drawing is copyright of Orkney Islands Council.  
 DEVELOPMENT AND INFRASTRUCTURE  
 Council Offices, Kirkwall  
 Orkney, ZE11 1JY  
 Tel: 01856 870000  
 www.orkney.gov.uk