

2023 Progress update of CLD Partners Plan 2021-24

To highlight progress to date the actions are coloured as follows:

- 10 have been completed (blue)
- 10 are on target to be completed within the timescales set (green)
- 1 has not been completed within the timescales set (red)
- 4 out of 7 actions identified as unmet needs have had some progress made (orange)

Connectivity:

Support Community organisations to identify need and investigate opportunities for the development and co-production of Learning Hubs

Co-ordinate service delivery to ensure basic IT support and training is available in the community

Collaborate with the local SCAM group to use CLD approaches to coordinate delivery of internet safety training across the community

Sustainable Recovery:

Develop collaborative approaches in the delivery of voluntary sector support services to help enhance community development opportunities

Work collaboratively with the Community Wellbeing Delivery Group, to design and deliver learning opportunities for early intervention support and health and wellbeing programmes and activities to meet local needs

How does this plan link to Community Planning?

The CLD Partners Plan 2021-24 will focus on elements of each of the Community Planning Partnership priorities, each underpinning the importance of using CLD approaches to help address and progress these important areas of work.



Community Wellbeing:

Work collaboratively to support the delivery of outcomes from the local Child Poverty Strategy, with a focus on learning, training and personal development

Increase SCLG support to the work of the Refugee Planning Group to ensure CLD approaches and informal ESOL provision and community support underpin outcome delivery

Increase the continuous involvement of young people and other priority groups who are identified as needing support to ensure inclusion of representative voices

Coordinate and contribute to the delivery of wellbeing activities and mental health awareness to upskill people in the community to promote mental wellbeing and reduce stigma

Wider promotion of the values of volunteering to health, wellbeing and to the community

Carry out a scoping exercise to identify current adult learning delivery and needs across Orkney which can be addressed through collaborative approaches

Work collaboratively to plan and deliver Literacy / Numeracy provision to meet local need for individuals, families and communities

Increase knowledge and understanding across the partnership of youth work approaches and increase capacity for partners to deliver recognised youth work awards.

Expand targeted youth work opportunities to engage those who would most benefit from youth work activity and support

Provide training and information sessions on UNCRC for the wider CLD sector

What is the CLD Partners Plan?

Orkney CLD Partners Plan is created by the Strategic Community Learning Group. By working with learners and communities, it helps partners to plan together, avoid duplication, strengthen coordination and improve understanding and delivery around community needs.



Workforce Development:

Explore and expand opportunities and pathways into and within the CLD profession through collaborative work with the two regional Alliances

Deliver information sessions to wider partners / partnerships to promote the benefits of CLD and the use of CLD competencies

Support the wider CLD workforce to benefit from CLD Standards Council registration

Undertake a needs assessment to identify the professional learning needs of our CLD Sector

Work with partners including The North and Northern Alliance to create a suite of training for CLD workforce to meet the assessment of need

Improve methods for collaborative data collection in response to the chosen KPIs

Unmet Needs 2021-24

At a time of changing policies, priorities and resources, it is clear that not all CLD needs can be met during the lifetime of this plan. Some identified areas of unmet needs are highlighted below, although during year 2, some progress was made on 4 of the 7 areas listed (marked orange).

Development of wider accreditation opportunities for adults

Widening STEM opportunities through CLD activity

Undertake a Third Sector Skills Survey

Work to raise awareness of climate challenge and provide support within the community

Expanding partnership work with housing partners to explore preventative work around homelessness

Develop closer links with partners leading on transport and broadband improvements to ensure barriers to participation in learning are reduced

Identifying resources to fund individual professional qualifications and wider opportunities for staff within the CLD sector

Want to know more?

A detailed copy of the 2023 CLD Plan Review and Evaluation and the 2023 updated CLD Partners Plan 2021-24 can be found at:

[Community Learning and Development \(orkney.gov.uk\)](https://orkney.gov.uk)



You can also pick up a copy from various locations or contact the CLD Team at Orkney Islands Council on 873535 ext. 2425 or email: cld@orkney.gov.uk



Community Learning & Development

Partners Plan 2021—2024

2022 - 2023 Progress Review

Orkney Islands Council has a statutory duty to produce a plan with partners every 3 years to ensure adequate provision of CLD.

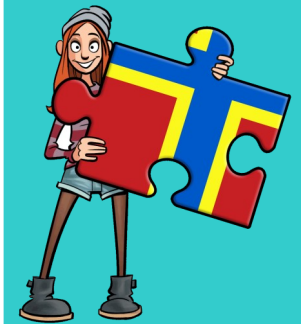
Orkney's 3 year partnership plan for Community Learning and Development (CLD) is produced by Orkney's Strategic Community Learning Group (SCLG), a partnership of both private and third sector organisations who are delivering CLD support and activities across Orkney.

The CLD Partners Plan 2021-24 sets out how we will deliver CLD across Orkney over the next 3 years, ensuring services are planned for and delivered in a joined up way.

Community learning and development (CLD) covers a broad range of practice including youth work, adult learning, family learning, volunteer and community development.

This leaflet sets out the progress made on the priority actions over the second year of this CLD Partners plan, from September 2022 up to September 2023.

What is Community Learning and Development (CLD)?



CLD is a way of working with individuals and communities which helps support individuals and groups to address issues of importance to them and promotes learning and social development.