

Orkney Islands Council has a statutory duty to produce a plan with partners every 3 years to ensure adequate provision of CLD. This requirement affects all public, voluntary, third sector, private sector agencies and community partners who contribute to work supporting:

- **Improved life chances for people of all ages, through learning, personal development and active citizenship;** and
- **Stronger, more resilient, supportive, influential and inclusive communities**

Following wide-ranging consultation it was agreed to align our CLD Partners Plan to the priorities recently identified for the new Orkney Community Planning Partnership Plan 2023-2030, ensuring the work of the Community Learning & Development Partnership will compliment that of the Orkney Partnership. In addition, two extra priority areas were added to cover health & wellbeing and workforce development.

The current priority areas for the CLD Partners Plan 2024-27 are:

- **Sustainable Development**
- **Cost of Living**
- **Local Equality**
- **Health & Wellbeing**
- **Workforce Development**



How does this plan link to Community Planning?

The CLD Partners Plan 2024-27 will focus on elements of each of the Community Planning Partnership priorities, each underpinning the importance of using CLD approaches to help address and progress these important areas of work.



Priority Areas of CLD Partners Plan 2024-27

Sustainable Development:

We will work to support sustainable development through partnership learning opportunities to build peoples skills, confidence and strengthen individual and community capacity and resilience to benefit everybody in our communities, with nobody left behind.

Cost of Living:

We will support individuals, children, and families through this difficult time, committing time, energy, and resources to work towards the elimination of poverty throughout Orkney. Addressing both immediate need and longer-term initiatives to combat persistent poverty.

Local Equality:

We will work to addresses the continuing disadvantage experienced by some of our communities when trying to access services, facilities and opportunities. Helping meet local needs through the effective provision of community learning and development opportunities to enhance individual and community capacity and resilience.

Health & Wellbeing:

We will work together to provide required support through the delivery of targeted interventions to improve health and wellbeing, build trusted relationship, increase confidence, improve resilience and develop new skills.

Workforce Development:

We will work to ensure we have a skilled workforce by raising awareness of CLD and strengthening planning and learning opportunities for those working and volunteering in the CLD sector.

What is the CLD Partners Plan?

Orkney CLD Partners Plan is created by the Community Learning & Development Partnership, working with learners and communities.

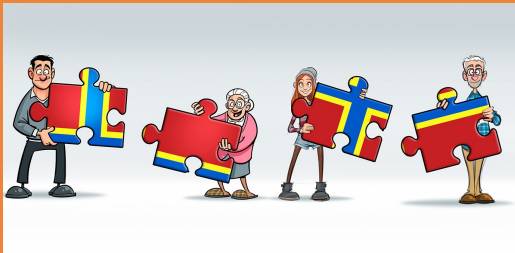
It help partners; plan together, avoid duplication, strengthen coordination and improve understanding of community needs.



Unmet Needs 2024-27

At a time of changing policies, priorities and resources, it is clear that not all CLD needs can be met during the lifetime of this plan. Identified areas of unmet needs include:

- Development of partnership work with Housing partners to explore opportunities around tenant participation
- Creation of a collaborative family learning strategy and plan
- Increased access to affordable childcare including breakfast club and after school provision.
- Whilst we have been unable to include as many specific actions in the plan around climate challenge as we would have liked, engagement work to raise awareness and support within the community continues, and we will seek to weave related opportunities into other actions in this plan where possible.



If you would like further information on the Orkney CLD Partners Plan, the work of the Community Learning & Development Partnership or if you would like to get involved please contact CLD on 873535 ext. 2425 or email cld@orkney.gov.uk

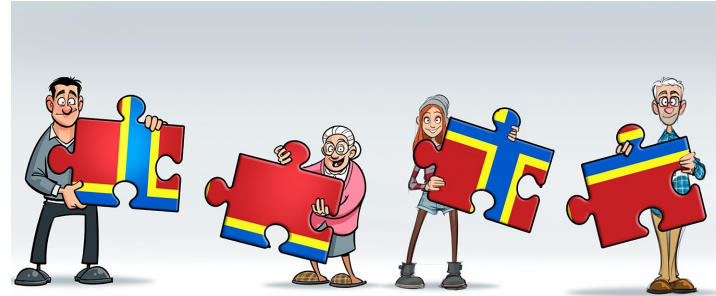
Want to know more?

A full copy of the CLD Partners Plan 2024-27 can be found at:

www.orkney.gov.uk/CLD-Plan



You can also pick up a copy from various locations including: Orkney Islands Council Customer Services, your local library or contact CLDE at Orkney Islands Council 873535, email cld@orkney.gov.uk or find us on Facebook @ communitylearninganddevelopmentorkney



Community Learning & Development Partners Plan 2024—2027

Orkney's 3 year partnership plan for Community Learning and Development (CLD) is produced by Orkney's Community Learning & Development Partnership, which includes both public sector and third sector organisations, who are delivering CLD support and activities across Orkney.

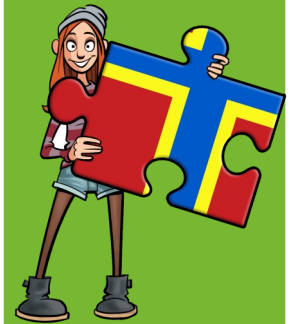
The CLD Partners Plan 2024-27 sets out how CLD will be delivered across Orkney over the next 3 years, ensuring services are planned for and delivered in a joined up way.

Community learning and development (CLD) covers a broad range of practice including youth work, adult learning, family learning, volunteer and community development.

This plan supports and develops the shared mission set out in the Orkney Community Plan and incorporated Local Outcomes Improvement Plan of:

'Working together for a better Orkney'.

What is Community Learning and Development (CLD)?



CLD is a way of working with individuals and communities which helps support individuals and groups to address issues of importance to them and promotes learning and social development.