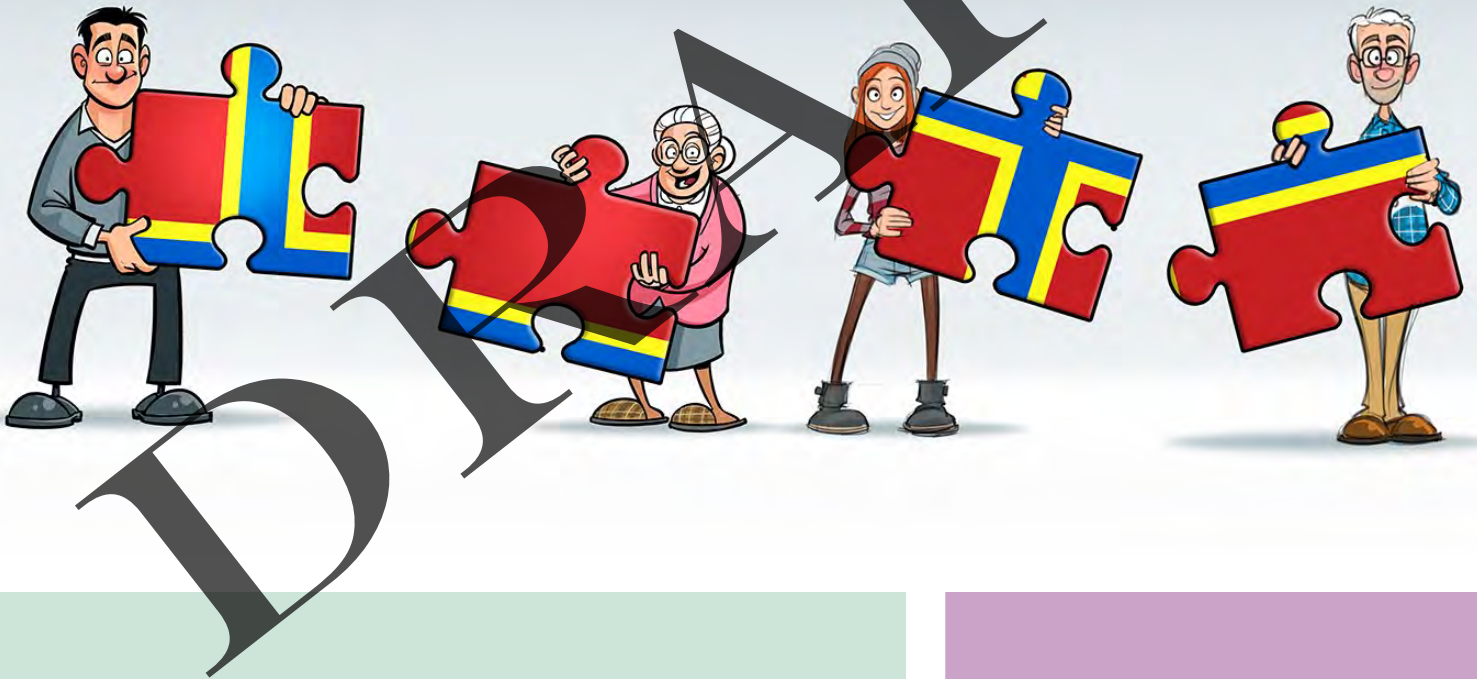


# Orkney

## Community Learning & Development



## 1. Welcome

Welcome to Orkney's 3 year partner plan for Community Learning and Development (CLD), produced by Orkney's Strategic Community Learning Group (SCLG), which is a partnership of public, private and third sector organisations who are delivering CLD support and activities across Orkney.

The CLD Partners Plan 2018-21 builds on the first Orkney CLD plan which covered the period 2015-2018 and sets out how we will deliver CLD across Orkney over the next 3 years, ensuring services are planned for and delivered in a strategic and collaborative way.

This plan supports and develops the shared mission set out in the Orkney Community Plan and incorporated Local Outcomes Improvement Plan 2018-21 of **'Working Together for a better Orkney'**.

Many developments have been made since the inception of the first plan including improved governance and strengthened connections with stakeholders, through regular summarised updates, and more formal links with other partnerships including Orkney's Community Planning Partnership.

Progress against key elements of the plan will be considered as a standing agenda item for every quarterly SCLG meeting. The plan will be reviewed and updated annually with formal reports on progress and amendments taken to the Education, Leisure & Housing Committee once a year.

This plan will be shared with the Orkney Partnership, our Community Planning Partnership, and progressed by the Strategic Community Learning Groups through their updated governance arrangements.

Peter Diamond

Chair, Strategic Community Learning Group

Head of Education (Leisure, Culture & Inclusion),

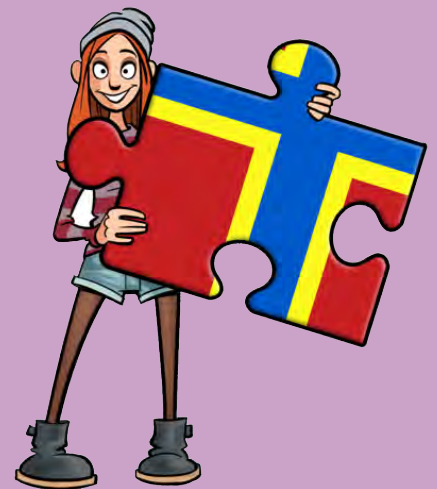
Orkney Islands Council

Date approved:

Signature:

### 1.1 What is Community Learning and Development (CLD)?

*CLD is a way of working with individuals and communities which helps empower those individuals and groups to address issues of importance to them and promotes learning and social development.*



## 2. Introduction /Background

Orkney Islands Council has a statutory duty (Community Learning & Development (Scotland) Regulations 2013) to produce a plan with partners every 3 years which ensures that there is “*secure adequate and sufficient provision of Community Learning & Development (CLD) in our area*”. The plan should provide a clearly defined framework for coordinating, planning and delivering CLD with partners.

The requirement affects all public, voluntary, third sector, private sector agencies and community partners who contribute to work supporting:

- **Improved life chances for people of all ages, through learning, personal development and active citizenship; and**
- **Stronger, more resilient, supportive, influential and inclusive communities**

The Revised Guidance Note on Community Learning & Development Planning 2018-21 states that CLD supports primarily disadvantaged or vulnerable groups and individuals of all ages to engage in learning, personal development and active citizenship with a focus on bringing about change in their lives and communities.

CLD is delivered by many partners within Orkney, including Orkney Islands Council, Highlands and Islands Enterprise, Orkney College, Voluntary Action Orkney, NHS Orkney, Police Scotland, Skills Development Scotland and other independent groups and charitable organisations.

It is the task of the SCLG and this plan to ensure that people in Orkney, especially those that are disadvantaged, have appropriate access to the CLD support they need. A full list of members of the SCLG is attached in Appendix 3.

All partners involved in the delivery of CLD should aim to deliver these objectives through:

- community development;
- youth work, family learning and other early intervention work with children, young people and families;
- community-based adult learning, including adult literacies and English for speakers of other languages (ESOL);
- learning for vulnerable & disadvantaged groups in the community;
- learning support and guidance in the community; and
- volunteer development

### 2.1 What is the purpose of community learning and development?

*The purpose of CLD is identified as empowering people, individually and collectively, to make positive changes in their lives and in their communities, through learning.*



### 3. Role of the Strategic Community Learning Group

The development of an updated joint CLD Partners Plan will facilitate how community learning and development will be taken forward by partners in Orkney.

Rather than producing a static plan for the next 3 years this will be a live and dynamic plan which will adopt a more fluid approach. The plan will be reviewed quarterly by the SCLG and a report will be submitted to the Orkney Islands Council, Education, Leisure & Housing Committee and Community Planning Partnership annually, reviewing progress and updating the plan to reflect any significant changes or developments, ensuring it remains an effective and relevant planning document.

As an inclusive and effective partnership, the work of the SCLG, over the lifetime of this plan will be guided by 4 overarching principles:

- Working collaboratively to improve outcomes for individuals, families and communities
- Sharing ownership, resources and data to improve the identification of needs, planning, monitoring and evaluation
- Developing self-evaluation and quality assurance to ensure continuous improvement
- Ensuring CLD staff and volunteers have the skills, confidence and training required to respond to local needs through appropriate workforce development

By maintaining a standard of practice across settings, participants will experience more consistency of practice based on common values whether they are involved in youth work activities,

#### 3.1 How will the SCLG maintain quality assurance?

*By working together and ensuring a standard of practice across settings, the SCLG will be able to progress the identified actions and participants will experience consistency based on community values.*



## 4. Review of the CLD Plan 2015-2018

In September 2015 the inaugural CLD plan for Orkney was published by the SCLG.

This has helped partners to plan together to avoid duplication, strengthen co-ordination in partnership working and approaches, and has improved understanding of the needs of the community.

Key successes included:

- Additional learning opportunities were created in rural locations to increase accessibility
- A range of approaches to organisational reviews were identified and promoted to local organisations
- Training needs surveys were completed and a range of relevant training delivered
- Increased input from young people into local services plans and policies where their views and opinions are reflected.

This plan contained 15 priority areas of which 10 were completed and 5 were partially completed over the 3 year period. The priority areas were supported by some 73 individual activities and work streams.

The “Empowered young people who are self-assured and access opportunities” outcome has been relocated to be taken forward through the Integrated Children's Services Plan to avoid duplication within plans.

Three out of the four actions identified as priorities that were unlikely to be met during the lifetime of the plan, were actually achieved, including the establishment of an outreach worker with the Connect Project.

Three actions have been carried forward to the new plan are:

- Targeting of family learning based on identified need (2.2)
- A webpage for orkneylearns so people are aware of learning opportunities and support available (3.4)
- Work with partners to review and identify gaps in learning opportunities for people with additional support needs (3.6)

### 4.1 What about the last CLD Plan 2015-18?

*A self evaluation and review of the CLD Plan 2015-18 was completed to ensure that valuable work is carried forward and that we learn and improve the planning process as we move to the 2018-21 CLD Partners Plan.*



## 5. The Orkney Community Learning and Development Partners Plan

The CLD Partners Plan 2018-21 supports and develops the shared mission set out in the Orkney Community Plan and incorporated Local Outcomes Improvement Plan 2018-21 of **‘Working together for a better Orkney’**.

This vision has been influenced by local and national priorities and the need to continually work towards improving the quality of services we provide.

The Orkney Community Plan and incorporated Local Outcomes Improvement Plan (LOIP) 2018-21 is delivered by a Partnership Board and 3 Delivery Partnerships, each of which focus on a key strategic priority of the Partnership. The current priorities, identified through significant community consultation, are:

- Strong Communities;
- Living Well; and
- Vibrant Economy

By aligning our CLD Partners Plan to the priorities identified by the Orkney Partnership, the work of the SCLG will complement that of the Orkney Partnership Board and strong communication links will provide a conduit for the dissemination of information and for alerting community planning, in the form of the Orkney Partnership Board to emerging priority issues.

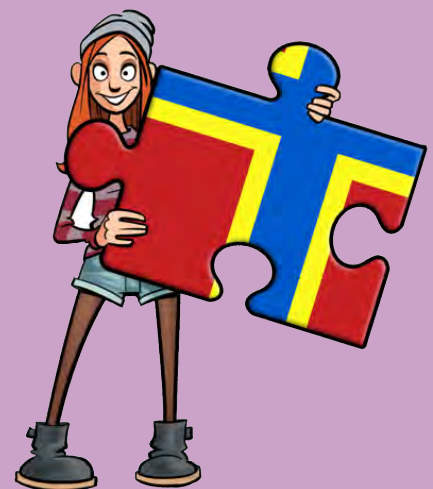
The biennial Orkney Chamber Debate, Orkney Youth Conference and The Annual Halls Event are examples of ongoing collaborations that shape both the ‘what’ (objectives) and also the ‘how’ (CLD approach) of our work.

### 5.1 What is Our Vision?

*Working together for a better Orkney*

### 5.2 How does this plan link to Community Planning?

*The CLD Partners Plan 2018-21 will focus on one element in each of the Community Planning Partnership priorities each underpinning the importance of using CLD approaches to address and progress these priorities.*



## 6. The Orkney Community Learning and Development Partners Plan

The CLD plan must have four elements:

- How the local authority will co-ordinate its own provision of CLD with other providers of CLD in its area.
- What action the local authority will take to provide CLD over the period of the plan.
- What action other providers intend to take to provide CLD in the local authority's area over the period of the plan.
- Statement of any needs for CLD that will not be met over the period of the plan.

The purpose of the plan is therefore to co-ordinate provision of CLD in the broadest sense, essentially all learning and development that takes place in the community, other than vocational training and programmes delivered by teachers in school and by tertiary education lecturers.

Rather than looking at CLD in its entirety, our new plan is focusing on 3 identified priorities within the Community Plan priority areas, which the SCLG can work together on to maximise impact. By virtue of the size of the local authority, strong community partnerships are crucial to ensure positive outcomes.

Many of the needs identified in the previous CLD plan continue to exist, and we will continue to support those targeted groups and individuals as required, through our core services and partner organisations.

Rather than list what individual partners are planning to do over the next 3 years this plan focusses on what the SCLG partnership is going to work on together to achieve over the period. By concentrating on areas of work that require collaboration and partnership approaches that individual organisations cannot achieve alone, the SCLG will be stronger than the sum of its parts.

### 6.1 What is the Orkney Community Learning and Development Partners Action Plan for?

*The plan will enable all partners to integrate and improve planning, delivery and evaluation of community learning and development and therefore improve opportunities and outcomes for learners.*



## 7. An Orkney Context

The total population of Orkney in 2017 was approximately 22,000, an increase of 0.7% from 21,850 in 2016. Approximately 18,500 people live on the mainland of Orkney and 3500 in the isles. Kirkwall, which is the biggest town, has a population of 9,000. The demographic profile has aged significantly in recent years with 29.2% of the Orkney population aged over 60 compared to the national figure of 24.2%. There is a trend of depopulation from the outer isles into the mainland of Orkney.

Life expectancy at birth for men and women is greater than the Scottish average.

Orkney currently has a strong economy with very high employment levels however it has a relatively low wage economy with underemployment rather than unemployment tending to be a factor. Unemployment currently stands at 2% (300 people) which remains much lower than Scotland as a whole. Of those aged 18-24, 1.3% are unemployed compared to 3.8% nationally.

The 2017-18 school leaver destination showed that 96.1% of 16-19 year olds in Orkney were in education, employment or training and personal development.

Farming and tourism sectors are the main industries for Orkney. Renewables is a key growth sector, with Orkney leading the way in tidal and wave energy.

Alongside the positive statistics, there are particular challenges facing our remote, rural, island communities in relation to housing and access to services. The rurality of Orkney can pose many challenges for service users in participating in activities or accessing the services they require, and also for providers in planning and service delivery.

With such high living costs, rural poverty is often 'hidden'. For example, families with little disposable income may not qualify for free school meals and, or be able to afford the cost of school trips or benefit from community activities where the cost of membership and difficulties relating to access present insurmountable barriers to participation.

Orkney has extremely active, resilient local communities with Community Councils, Community Associations, Development Trusts and local volunteers contributing greatly to the success of Orkney, ensuring our communities are inclusive and provides a real sense of 'connectedness' which helps to alleviate many of the disadvantages that exist within our rural community.

### 7.1 What is the demographic picture of Orkney?

*Our population has increased over the past number of years, but our demographic is also changing quite rapidly which presents a challenge. Nevertheless, our supportive community enables people to contribute to society for as long as possible helping to meet the current needs of our communities and ensuring the best start in life for our children and young people.*





## 8. Relevant statistics

### Support and Recognition of Community and Voluntary Contribution

Orkney has around 600 voluntary/community organisations and 237 registered charities (VAO Records) with a charitable income of £19,290,839 ([www.oscr.org](http://www.oscr.org) 02/10/17).

Orkney has one of the highest numbers of volunteers in Scotland with 34% of the adult population volunteering. (Scottish Household Survey), so it is vital that these volunteers are supported, recognised and valued.

### Family Learning

In 2016, 7% of children entered nursery with little or no language, with only 38% of these children being identified/working with Speech and Language Therapy, or a wider team, before entry.

It is estimated that one in five adults has difficulty with reading, writing or maths.

Currently 1325 families have Activelife / ActiveIsland Family memberships and there are 285 budget memberships.

Last year participants cited the main benefits of taking part in the Councils Community Learning classes as: Learning new skills (67%), the chance to get out and socialise (66%), helps me stay healthy,(63%) helps keep me mentally active (61%).

In 2015, 94% of Community Learning class participants were over 60. By building on informal learning approaches, which are so popular with our aging population, we can develop more intergenerational opportunities for families of all ages to learn together.

### Learning Pathways

Unemployment currently stands at 2% in Orkney compared to 4.2% for the rest of Scotland.

96.1% of schools leavers moved into a positive destination in 2016-17.

High numbers of S4 & S5 leavers, 58% and 60% of S6 leavers move into employment with smaller percentages only 28% of S4 and S5 leavers going onto further education.

It is important that we provide clear accessible learning pathways for people of all ages and especially those facing key life transitions.

What do the statistics tell us?

*Orkney has one of the highest numbers of registered charities per head of population in Scotland*

*The number of children entering P1 who had reached their developmental milestones had decreased slightly from 81% in 2016 to 79% in 2017.*



*In Orkney, 33.8% of the population have National Vocational Qualifications at level 4 and above compared to 43.9% nationally.*

## 9. Our Community Learning and Development Consultation

### Appraisal of CLD Plan 2015-18

A self evaluation exercise and a Smart Survey were completed to review the initial CLD plan for Orkney.

A review of the previous CLD Consultation identified that the barriers to participation remain the same

- Availability and the main objectives:
- Affordability - Participation
- Accessibility - Partnership
- Awareness - Performance
- Assurance

The recent and extensive Place Standards Community Consultation undertaken by Community Planning is directing the priorities for the plan

- Digital connectivity
- Work & local Economy
- Housing & Community
- Getting around
- Influence & Engagement

Which led to the 3 priority themes for Community Planning

- Strong Communities
- Living Well
- Vibrant Economy

The plan is incorporating feedback from a recent HMI Inspection of CLD in Orkney by incorporating

- Self evaluation / monitoring
- Shared ownership
- Support to volunteers
- Developing learning pathways

Findings from the Draft Child Poverty Review 2018 has also contributed to the CLD Partners Plan 2018-21, identifying the following requiring

- Awareness
- Acceptance
- Action

### Strategic and operational partners workshops

A number of sessions were organised including a full day workshop event, to identify and prioritise the actions for the plan with a variety of CLD staff and volunteer practitioners.

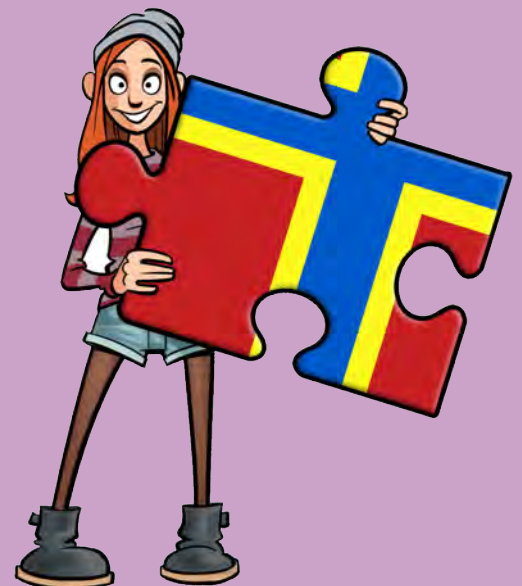
### Orkney Opinions

The draft plan was put out for community consultation using a variety of methods including Orkney's new Public Consultation Group & Orkney Youth Forum.

### 9.1 Methodology?

*This plan was informed and priorities identified through a variety of consultative approaches. Stakeholders, including learners, community groups and young people were involved through new and existing vehicles for community consultation and engagement.*

*During the development of the new plan, partners from the Strategic Community Learning Group met regularly to analyse and discuss the findings, ensure appropriate linkages were made with other partnership plans and agree appropriate shared actions.*



## 10. Summary of Findings

The priorities agreed in the CLD Partner Plan 2018-21 are based on a full understanding of local need. These priorities have been identified through direct engagement with the local community, local research and analysis of relevant data and partner organisations knowledge in their CLD related field of expertise.

This has led to:

- The identification of target individuals and groups
- Consideration of the needs of those target individuals and groups
- An assessment of the degree to which these needs are already being met
- Identification of the barriers to the adequate and efficient delivery of CLD

The three biggest cross-cutting issues for Orkney communities, namely digital connectivity, transport and housing & fuel poverty, are being progressed directly by the Orkney Partnership Board.

Under the three Community Planning Partnership delivery priority themes of Strong Communities, Living Well and Vibrant Economy the Strategic Community Learning Group has identified under each of these work streams the following priorities:

- **Support and Recognition of Community and Voluntary Contribution**
- **Family Learning**
- **Improving Learning Pathways**

### 10.1 What are the key outcomes for the SCLG during the lifetime of this plan?

- *Volunteers and community groups feel supported, recognised and valued.*
- *Young people and families experience improved outcomes by learning together.*
- *Skills for learning, life and work are supported by clear and effective learning pathways.*

## 11. Links to other plans and policies

Alongside local data, information and consultation, this plan also takes into account a number of strategic policies and plans, both local and national, listed in Appendix 2, which relate to the needs of groups, individuals and communities in Orkney.

CLD practitioners work across a number of strategic priorities and aligning to the local Community Plan and incorporated Local Outcomes Improvement Plan this plan reflects the priority areas of need and will assist in achieving the high level outcomes agreed.



## 12. Conclusions

The information gathered by the SCLG has been used to develop the CLD Partners Plan for the next 3 years, attached in Appendix 1. The Partners Plan contains outcomes we aspire to and actions we will take to make improvements to current provision and develop new ones. In addition the CLD Partners Plan identifies gaps in provision which cannot be met in the timescale of this plan.

The strategic direction for the SCLG and the actions outlined in the partners plan have been developed and prioritised and will be delivered and evaluated through this partnership over the next 3 years. Working together through the plan will enable improved life chances for people of all ages, through learning, personal development and active citizenship which will help develop stronger, more resilient, supportive, influential and inclusive communities.



## 13. Monitoring and Evaluation

Community Learning and Development activity is evaluated using 'How Good Is Our Community Learning and Development', a framework that includes a common set of quality and performance indicators for use in self-evaluation by practitioners and managers and in Learning Community inspections by Her Majesty's Inspectorate of Education. There is a clear need to improve how outcomes are demonstrated, data recorded and how the work in and around the plan is jointly monitored and evaluated.

The CLD Partners Plan 2018-21 will be updated on a quarterly basis by the SCLG. It will be reviewed annually and a report will be submitted to Orkney Islands Council's Education, Leisure & Housing Committee. A summary and progress update will also be disseminated widely to partners and stakeholders annually.

14. Appendix 1— Orkney CLD Partners Plan 2018-21



The Strategic Community Learning Group (SCLG) are working to the shared mission set out in the Orkney Community Plan and incorporated Local Outcomes Improvement Plan 2018-21 of ‘Working Together for a better Orkney’.

By aligning the Community Learning & Development (CLD) Partners Plan to the priorities identified by Orkney Partnership, namely, Strong Communities; Living Well and Vibrant Economy, the work of the SCLG will complement that of the Orkney Partnership Board and ensure a CLD lens is applied to the priority themes. Strong communication links will provide a conduit for the dissemination of information and for alerting the community planning process to emerging priority issues.

Throughout the life of this 3-year plan The Strategic Community Learning Group will be guided by 4 overarching principals:

- Working collaboratively to improve outcomes for individuals, families and communities
- Sharing ownership, resources and data to improve the identification of needs, planning, monitoring and evaluation
- Developing self-evaluation and quality assurance to ensure continuous improvement
- Ensuring CLD staff and volunteers have the skills, confidence and training required to respond to local needs through appropriate workforce development

The focus of this CLD partnership plan for 2018-21 is:

<p style="text-align: center;"><b>Strong Communities</b> (Social capital) Relationships and society</p> <p style="text-align: center;">↓</p> <p style="text-align: center;">Support and recognition of community and voluntary contribution</p> <p>When communities are confident, skilled, active, inclusive and influential they create a positive environment for people to enjoy a good quality of life. As Orkney relies so much on volunteering in our communities it is important to support and recognise our volunteers and community groups.</p> <p style="text-align: center;"><i>“Every person who works to make a difference to Scottish communities should be valued”</i> (Scottish Council for Voluntary Organisations, 2018)</p>	<p style="text-align: center;"><b>Living Well</b> (Human Capital) Health and wellbeing, knowledge, skills and motivation</p> <p style="text-align: center;">↓</p> <p style="text-align: center;">Family learning</p> <p>Family learning encourages family members to learn together as and within a family, with a focus on intergenerational learning. Through further collaboration we will develop a better understanding of family learning opportunities, needs and developments required to ensure we are supporting those young people and families most in need of support.</p> <p style="text-align: center;"><i>“Family learning is a powerful method of engagement and learning which can foster positive attitudes towards lifelong learning, promote socio-economic resilience and challenge educational disadvantage”</i> (Scottish Family Learning Network, 2016)</p>	<p style="text-align: center;"><b>Vibrant Economy</b> (Natural Capital) Input to produce goods/services/materials</p> <p style="text-align: center;">↓</p> <p style="text-align: center;">Improving learning pathways</p> <p>Given the variety of learning opportunities to develop skills for learning, life and work available in Orkney, more holistic approaches are required to collate sources of information so that people of all ages are better supported to reach their full potential.</p> <p style="text-align: center;"><i>“Community learning &amp; development plays a central part in ensuring individuals, families and communities across Scotland reach their potential through lifelong learning, mutual self-help and community organisation”</i> (Strategic Guidance for Community Planning Partnerships Community Learning &amp; Development, 2012)</p>
--	--	---

### 1. Support and Recognition of Community and Voluntary Contribution

Outcome	Existing provision	Key objectives / actions (SMART)	Timescale	Lead	Output / Outcome indicators
Volunteers and community groups feel supported, recognised and valued	<p>Partners are already delivering a significant level of training, support and activities for community and volunteer groups in Orkney as detailed in the locality plan</p> <p><a href="http://www.orkneycommunities.co.uk/COMMUNITYPLANNING/documents/locality-plan/locality-plan-for-non-linked-isles-appendix-1.pdf">http://www.orkneycommunities.co.uk/COMMUNITYPLANNING/documents/locality-plan/locality-plan-for-non-linked-isles-appendix-1.pdf</a></p> <p><i>Including a training calendar collated and issued monthly by VAO, Volunteers Week national/local celebrations, Quality Volunteering Awards, Sports Awards, Annual Youth Awards Ceremony, various Youth Awards and the development of a volunteering outcomes framework.</i></p>	1.1 Collaboratively compile volunteering activity and statistics from across Orkney annually to provide a more accurate understanding of the range of volunteering activity taking place	March 2019	Chief Executive, Voluntary Action Orkney (VAO)	Collated volunteering statistics Increase in volunteering activities recorded
		1.2 Establish statistical information and create stretch aims linked directly to the output and outcome indicators.	March 2019	Chief Executive, VAO	Statistical information gathered and collated Stretch aims developed
		1.3 Undertake a training needs audit and analysis to form a calendar of joint learning opportunities for staff and volunteers	June 2019	Chief Executive, VAO	Needs analysis completed Calendar of joint training opportunities created Increase in joint training opportunities offered over the life of the plan Increase in the number of staff and volunteers accessing training opportunities over the life of the plan Number of organisations supported *
		1.4 Jointly raise the profile of community and voluntary activity that takes place across Orkney through joint promotion and events including organising a community development event in partnership with Orkney Community Planning Partnership's Strong Communities Delivery Group and seek to recruit to areas where gaps have been identified	September 2019	Strong Communities Delivery Group (SC)	Joint event organised Awareness and sharing of information Number of participants attending events * Evaluations of events
		1.5 Ensure the strengthening of the 'marginal' group voice is heard within democratic structures	September 2019	Team Leader, CLD Service	Community representative invited to sit on the SCLG Approved structures in place to ensure marginal groups represented in decision making processes

## 2. Family Learning

Outcome	Existing provision	Key objectives / actions (SMART)	Timescale	Lead	Output / Outcome indicators
Young people and families experience improved outcomes by learning together	<p>There is a diverse range of family learning activity currently taking place across Orkney including befriending, intergenerational programmes and family learning activities are being developed within community learning programmes.</p> <p>The Orkney Children &amp; Young Peoples Partnership is currently undertaking a review of parenting support programmes available across Orkney.</p> <p>Links are being established between Education, Leisure &amp; Housing and other partner organisations to develop the parental engagement and family learning agenda with a focus on CLD approaches.</p>	2.1 Creation of a working group to complete an audit of existing Family Learning activity within Orkney and research Family Learning activities in other areas	June 2019	Team Leader, Community Learning & Development (CLD) Service	<p>Audit completed</p> <p>Report presented, and available services/activities promoted</p> <p>Stakeholder representative on working group</p>
		2.2 Establish statistical information and create stretch aims linked directly to the output and outcome indicators.	June 2019	Team Leader, CLD Service	<p>Statistical information gathered and collated</p> <p>Stretch aims developed</p>
		2.3 Develop collaborative and targeted approaches to Family Learning through a variety of inclusive programmes and activities for families most in need, including: <ul style="list-style-type: none"> <li>• Healthy Eating</li> <li>• Digital Technology</li> <li>• Hazardous Substances</li> <li>• Financial Literacies</li> <li>• Health and Wellbeing</li> <li>• Support for parents of teenagers</li> <li>• ActiveLife Family &amp; ActiveLife Budget membership</li> </ul>	December 2019	Team Leader, CLD Service	<p>Evaluations highlight positive outcomes for participants *</p> <p>Increase in ActiveLife family membership</p> <p>Increase in number of Family Learning programmes and activities delivered over the life of the plan *</p> <p>Increase in number of people participating in Family Learning programmes over the life of the plan *</p> <p>Case studies</p>
		2.4 Wider review of Family Learning programmes, activities and support, including consultation exercise, carried out to identify the needs and priorities for families which will lead to the formation of a Family Learning Partnership Plan and Programme	December 2020	Team Leader, CLD Service	<p>Consultation completed</p> <p>Family Learning Partnership Plan developed</p> <p>Joint Family Learning programme developed and delivered</p> <p>Increase in participants *</p>
		2.5 Identify and understand the impact of unpaid caring on young people and families	June 2020	Manager, Orkney Public Health	Report with recommendations submitted and action plan produced



## 3. Learning Pathways

Outcome	Existing provision	Key objectives / actions (SMART)	Timescale	Lead	Output / Outcome indicators
Skills for learning, life and work are supported by clear and effective learning pathways	<p>The newly established Orkney Skills and Employment Strategy Group will audit the established operational groups to ensure strategic and operational co-ordination are linked to its outcomes.</p> <p>Aligning to this, the operational Orkney Offer Group are in the process of broadening its stage development from senior phase to also include:</p> <ul style="list-style-type: none"> <li>• Early Learning &amp; childcare</li> <li>• The Broad General Education</li> <li>• The 15-24 Pathway</li> <li>• Further &amp; Higher Education</li> <li>• Leisure &amp; Culture</li> <li>• Adult &amp; Community Learning</li> </ul> <p>Wider achievement is promoted and supported through a range of accredited and non-accredited learning opportunities. There are various formal and informal learning opportunities available including intergenerational learning and local Development Trusts offering varying levels of support to residence to ensure learning opportunities are more accessible.</p>	3.1 Engage with the relevant workstreams within the Orkney Offer and the Orkney Skills & Employability Strategy Group to enhance learning pathways in Orkney	June 2019	Principal, Orkney College	Co-ordinated strategic understanding of the landscape  Record/feedback of meetings
		3.2 Re-establish the Orkney Learning Guidance Forum (OLGF) with a remit to share information, share good practice, promote joint working and support delivery of the CLD Partners Plan	November 2018	Principal, Orkney College and CLD Team Leader	Learner representative on working group  3 recorded meetings per year to develop partnership approaches and support delivery of the CLD Plan  Practitioners report improved coordination and joint working
		3.3 Carry out a needs analysis, including statistical information to create stretch aims, map existing provision and establish an action plan to address identify gaps in learning opportunities and pathways	June 2019	OLGF	Needs analysis completed and action plan produced with a report including recommendations submitted to SCLG  Stretch aims developed  Identified gaps in provision inform planning
		3.4 Increase awareness of opportunities and learning pathways through the development of an 'Orkney Learns' online resource	August 2020	OLGF	'Orkney Learns' resource developed and promoted on Orkney.com  Number of visits to site *  Feedback highlights improved access to information on learning opportunities  Evaluations show an increase in knowledge, skills and confidence over the period of the plan *
		3.5 Work with partners to review existing and identify gaps in learning opportunities available for people with additional support requirements; work with partners to address the gaps in community learning opportunities	September 2020	Principal, Orkney College	Review completed  New opportunities developed over the life of the plan  Evaluations highlight positive outcomes for participants *

\* New baseline needs to be established

Unmet needs:

- Formal recognition of volunteering activity
- Creation of a communication strategy for the improved understanding of community learning and development in the wider context
- Develop collaborative digital literacy learning opportunities
- Develop further partnership approaches with a focus on mental health to ensure the preventative and therapeutic value of CLD activity is recognised
- Increase linkage with the Orkney Partnership Locality Plan, which focuses on the non-linked isles, to ensure equity of access to CLD services and support across Orkney



## **Appendices 2**

### **List of key policies and plans that link to the CLD Partners Plan 2018-21**

Orkney's Community Plan & incorporated LOIP 2018-21

<http://www.orkneycommunities.co.uk/COMMUNITYPLANNING/documents/orkney%20community%20plan/orkney-community-plan-2018-21-incorporating-the-loip-version-1.1.pdf>

Orkney Islands Council Plan 2013-18

[http://www.orkney.gov.uk/files/council/council-plans/our\\_plan\\_2013-2018.pdf](http://www.orkney.gov.uk/files/council/council-plans/our_plan_2013-2018.pdf)

Orkney Partnership Locality Plan 2018-21

[http://www.orkney.gov.uk/Files/Committees-and-Agendas/Policy-and-Resources/PR2018/19-06-2018/I08\\_App1\\_Locality\\_Plan\\_Non-Linked\\_Isles\\_Appendix\\_2.pdf](http://www.orkney.gov.uk/Files/Committees-and-Agendas/Policy-and-Resources/PR2018/19-06-2018/I08_App1_Locality_Plan_Non-Linked_Isles_Appendix_2.pdf)

Orkney CLD Plan 2015-18

<https://education.gov.scot/improvement/documents/cld22-orkneyclstrategy2015-18.pdf>

Education Leisure & Housing Service Plan 2016-19

[http://www.orkney.gov.uk/Files/Performance\\_Files/2016\\_Performance/Post\\_June16/Education\\_Leisure\\_and\\_Housing\\_-\\_Service\\_Plan\\_2016-19.pdf](http://www.orkney.gov.uk/Files/Performance_Files/2016_Performance/Post_June16/Education_Leisure_and_Housing_-_Service_Plan_2016-19.pdf)

Orkney Islands Council Plan 2018-23

[http://www.orkney.gov.uk/Files/Committees-and-Agendas/Policy-and-Resources/PR2018/20-02-2018/I06\\_App1\\_Draft\\_Council\\_Plan.pdf](http://www.orkney.gov.uk/Files/Committees-and-Agendas/Policy-and-Resources/PR2018/20-02-2018/I06_App1_Draft_Council_Plan.pdf)

Orkney's Children's Services Strategic Plan 2016-18

[http://www.orkney.gov.uk/Files/OHAC/ICSP\\_2016\\_2018.pdf](http://www.orkney.gov.uk/Files/OHAC/ICSP_2016_2018.pdf)

Orkney National Improvement Framework Improvement Plan 2017

[http://www.orkney.gov.uk/Files/Committees-and-Agendas/Education/ELH2017/15-11-2017/I06\\_App1\\_National\\_Improvement\\_Framework.pdf](http://www.orkney.gov.uk/Files/Committees-and-Agendas/Education/ELH2017/15-11-2017/I06_App1_National_Improvement_Framework.pdf)

Orkney Joint Health Improvement Plan 2017-19

[http://www.orkney.gov.uk/Files/OHAC/IJB/Strategic\\_Commissioning\\_Plan\\_Refresh\\_2017\\_2019.pdf](http://www.orkney.gov.uk/Files/OHAC/IJB/Strategic_Commissioning_Plan_Refresh_2017_2019.pdf)

Orkney Community Justice Partnership Draft Outcomes Improvement Plan 2018-21

<http://s3.spanglefish.com/s/34034/documents/community-justice/2018/2018--21-draft-orkney-community-justice-outcomes-improvement-plan.pdf>

Community Development Activities and Information for Orkney Locality Plan

<http://www.orkneycommunities.co.uk/COMMUNITYPLANNING/documents/locality-plan/locality-plan-for-non-linked-isles-appendix-1.pdf>

Orkney Locality Place Standards Consultation

<http://s3.spanglefish.com/s/34034/documents/community%20engagement/island-localities-consultation-report-feb-2017.pdf>

National outcomes for community learning & development

<http://www.scdc.org.uk/news/article/consultation-national-outcomes-scotland-2018/>

Community Empowerment Act 2015

<http://www.legislation.gov.uk/asp/2015/6>

Community Empowerment Act easy read guidance

<https://beta.gov.scot/publications/community-empowerment-act-easy-read-guidance/>

National Youth Work Strategy 2014-19

<https://www.youthlinkscotland.org/policy/national-youth-work-strategy/>

National Youth Work Strategy 2014/19 – interim report

<https://education.gov.scot/Documents/NationalYouthWorkStrategyInterimReportJuly2017.pdf>

National Youth Work Outcomes

<https://www.youthlinkscotland.org/policy/youth-work-outcomes/>

Getting It Right For Every Child

[Getting it right for every child \(GIRFEC\)](#)

Getting It Right For Every Child –Orkney Guidance

[http://www.orkney.gov.uk/Files/Education-and-Learning/Orkney\\_GIR\\_Guidance\\_2012.pdf](http://www.orkney.gov.uk/Files/Education-and-Learning/Orkney_GIR_Guidance_2012.pdf)

Curriculum For Excellence

<https://www.gov.scot/resource/doc/226155/0061245.pdf>

National Improvement Framework

<https://beta.gov.scot/policies/schools/national-improvement-framework/>

National Performance Framework

<https://www.gov.scot/About/Performance/purposestratobjis>

Developing Scotland's Young Workforce

[https://education.gov.scot/scottish-education-system/policy-for-scottish-education/policy-drivers/Developing%20the%20Young%20Workforce%20\(DYW\)](https://education.gov.scot/scottish-education-system/policy-for-scottish-education/policy-drivers/Developing%20the%20Young%20Workforce%20(DYW))

Children and Young People (Scotland) Act 2014

<http://www.legislation.gov.uk/asp/2014/8/contents/enacted>

Scotland's Sport Strategy For Children & Young People

<https://www.gov.scot/Publications/2014/06/7317/0>

Opportunities For All - Post-16 transitions - Policy and Practice Framework

<https://www.gov.scot/Publications/2014/08/4869/0>

Skills for Scotland: A Lifelong Skills Strategy

<https://www.gov.scot/Publications/2007/09/06091114/0>

Scotland's Adult Literacies Curriculum Framework Guidelines

<https://education.gov.scot/Documents/adult-literacies-curriculum-framework.pdf>

Welcoming Our Learners: Scotland's ESOL Strategy 2015-2020

[http://dera.ioe.ac.uk/22892/2/ESOLStrategy2015to2020\\_tcm4-855848\\_Redacted.pdf](http://dera.ioe.ac.uk/22892/2/ESOLStrategy2015to2020_tcm4-855848_Redacted.pdf)

Adult Learning Statement of Ambition

<https://education.gov.scot/Documents/adult-learning-statement.pdf>

Adult Learning National Outcomes

<https://education.gov.scot/Documents/cld-plans-2015to18.pdf>

Scotland's ESOL Strategy 2015-20

[http://dera.ioe.ac.uk/22892/2/ESOLStrategy2015to2020\\_tcm4-855848\\_Redacted.pdf](http://dera.ioe.ac.uk/22892/2/ESOLStrategy2015to2020_tcm4-855848_Redacted.pdf)

National Standards for Community Engagement

<http://www.scdc.org.uk/what/national-standards/>

The Requirements for CLD (Scotland) Regulations 2013: Guidance for Local Authorities

<https://education.gov.scot/Documents/cld-regulations-la-guidance.pdf>

Strategic Guidance for Community Planning Partners, Community Learning and Development

<https://beta.gov.scot/publications/strategic-guidance-community-planning-partnerships-community-learning-development/>

Revised Guidance Note on CLD Planning

<https://education.gov.scot/Documents/CLDGuidanceNotes2017.pdf>

How Good is the Learning and Development in Our Community

[http://dera.ioe.ac.uk/26711/1/how-good-is-the-learning-and-development-in-our-community-v3\\_tcm4-875684.pdf](http://dera.ioe.ac.uk/26711/1/how-good-is-the-learning-and-development-in-our-community-v3_tcm4-875684.pdf)

CLD Standards Value & Ethics

<http://clidstandardscouncil.org.uk/resources/standards-and-benchmarks/national-occupational-standards/>

National Review of CLD Plans 2015-18 'Planning for Change in Scotland's Communities'

<https://education.gov.scot/Documents/cld-plans-2015to18.pdf>

Aspect Review of Progress made in Implementing the CLD Regulations 'CLD Planning'

<https://education.gov.scot/Documents/Aspect-Review-Report-of-CLD-Planning110417.pdf>

Inspection Report of CLD in Orkney Islands Council 15/1/18

<https://education.gov.scot/assets/contactorganisationinspectionreports/orkneyislandscl150118.pdf>

Growing the Learning Culture in CLD, CLD Standards Council for Scotland

<http://clidstandardscouncil.org.uk/cpd/cpd-strategy/>

National Policy Context for CLD Planning

<https://education.gov.scot/Documents/Accompanying-note-for-CLD-guidance-2017.pdf>

Review of Family Learning Supporting Excellence and Equity

<https://education.gov.scot/improvement/documents/family-learning-report-full-document.pdf>

16. Appendix 3 — Membership of Strategic Community Learning Group

