

What has happened since the project was announced?

Month	Work carried out on Hoy Wind Farm project
April	Consultation in Hoy Scoping request submitted to Scottish Government Bird surveys commenced
May	Bird survey underway
June	Bird survey underway
July	Bird survey underway
August	Scoping opinion received from Scottish Government 1 st year breeding bird survey completed 1 st year non-breeding bird survey commenced
September	Review of Scoping opinion Indicative bird collision risk assessment undertaken on data gathered
October	Review of Scoping opinion
November	Additional constraints identified and mapped
December	Redesign of wind farm based on reduced capacity and taller turbines
January	Consultation in Hoy

Your feedback – concerns raised by the community

“The siting of such an enormous farm here would likely reduce one of the island's main sources of income - tourism.”

“I'm in favour of renewable energy but, for the time being, it's probably easier to see the positive side of this if you don't live nearby.”

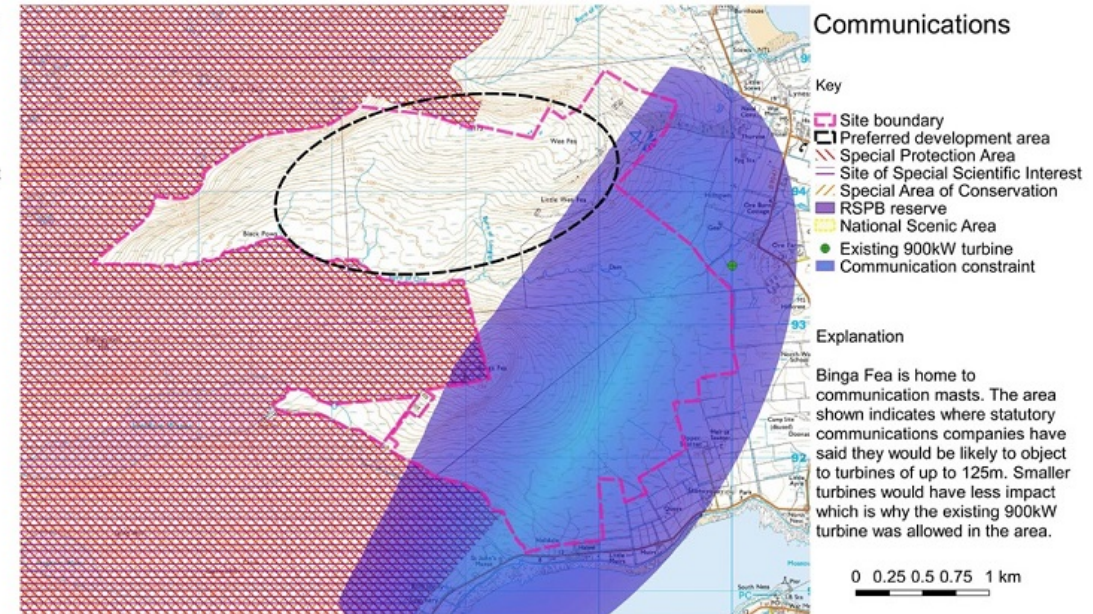
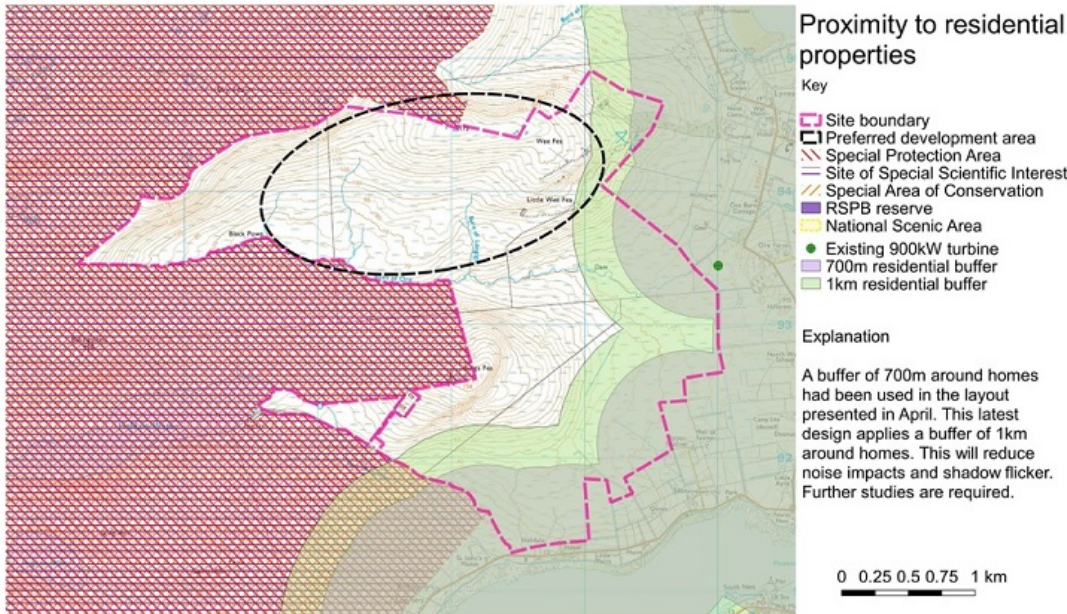
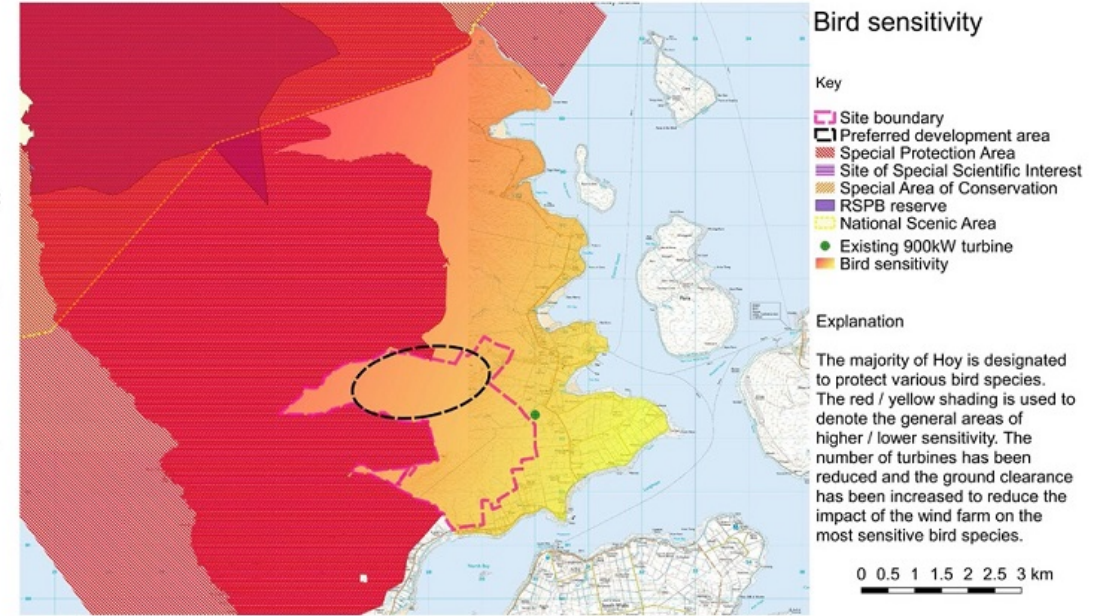
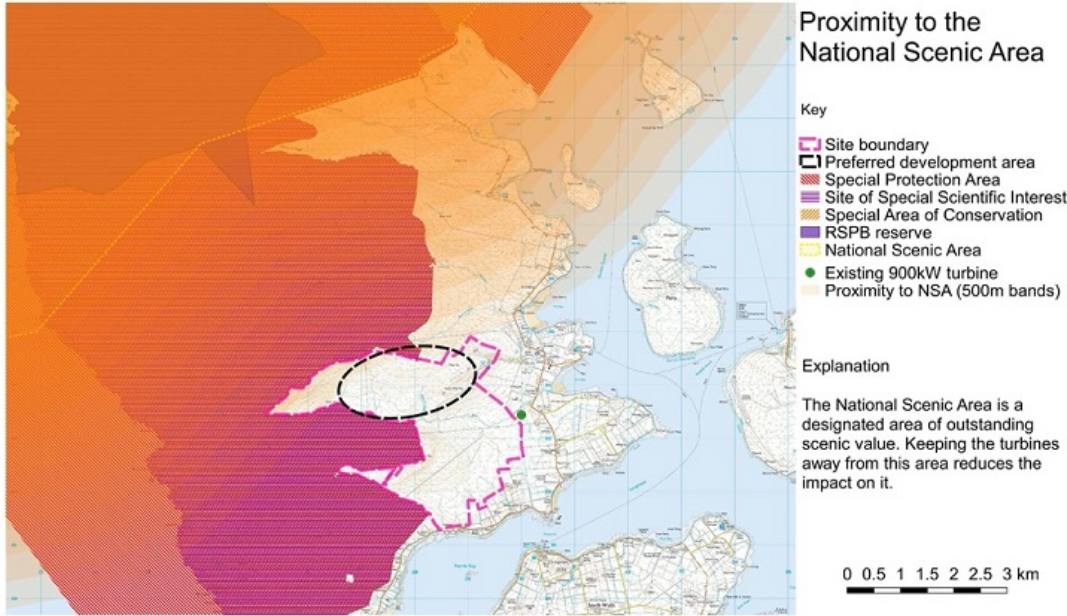
“All that noise to ruin the scenery for ever. I should have added that some of the turbines sound more like the Hogwarts Express coming through the house.”

“I fear that some people will simply leave the island rather than live with a windfarm of this size.”

“The visual impact will be enormous, particularly for folk living in Longhope.”

“The proposed Wind Farm would be disastrous for Hoy on many counts, including the hen harriers etc.”

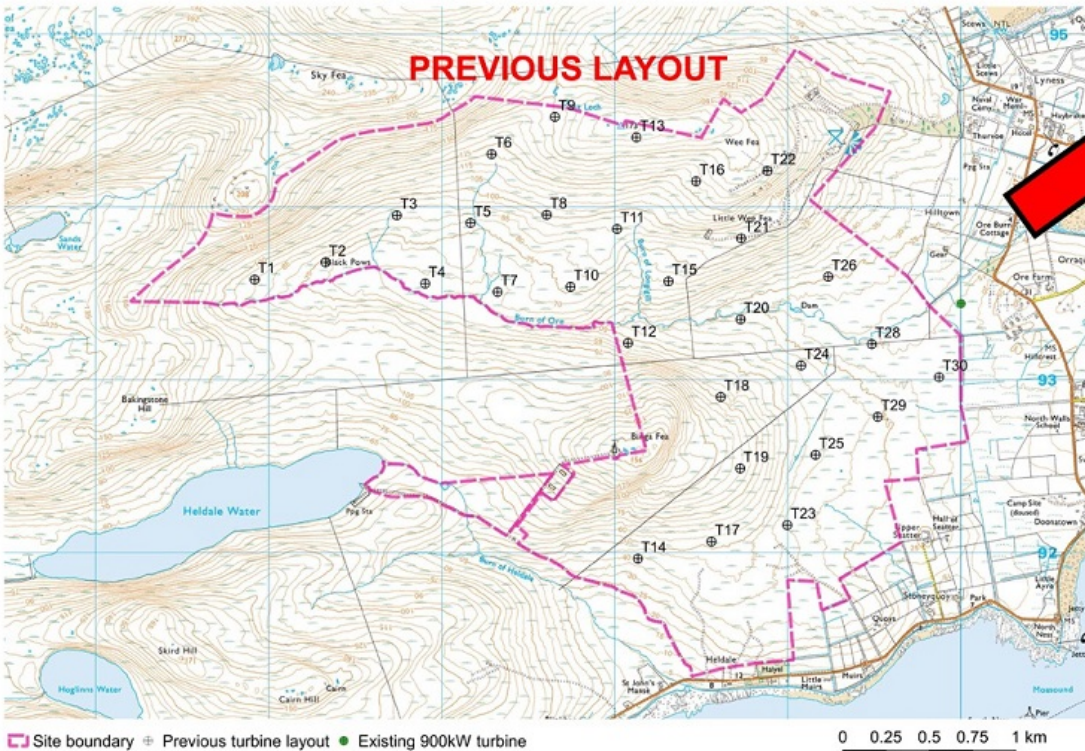
What have we found out?





ORKNEY
ISLANDS COUNCIL

Layout changes



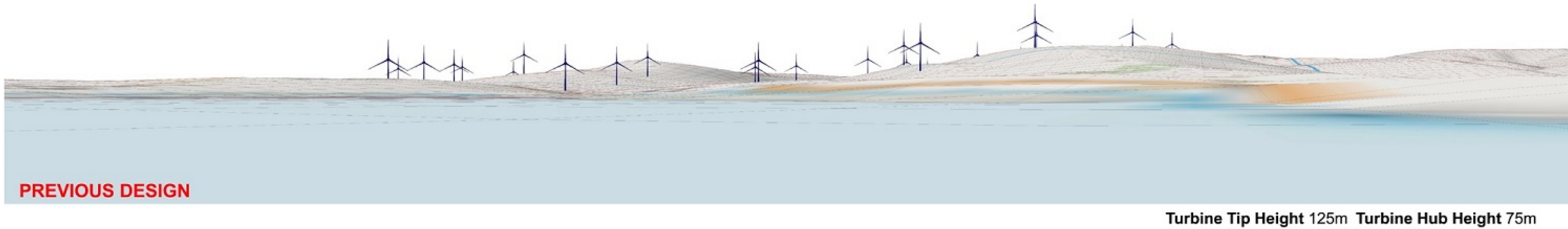
- Turbines have been
 - made taller
 - moved further from homes
 - moved towards the north of the site
- 7 turbines compared to 30 in the previous design
- Each turbine has a higher output

Previous design April 2018

View to Hoy Wind Farm from Longhope pier



View to Hoy Wind Farm from Lyness pier

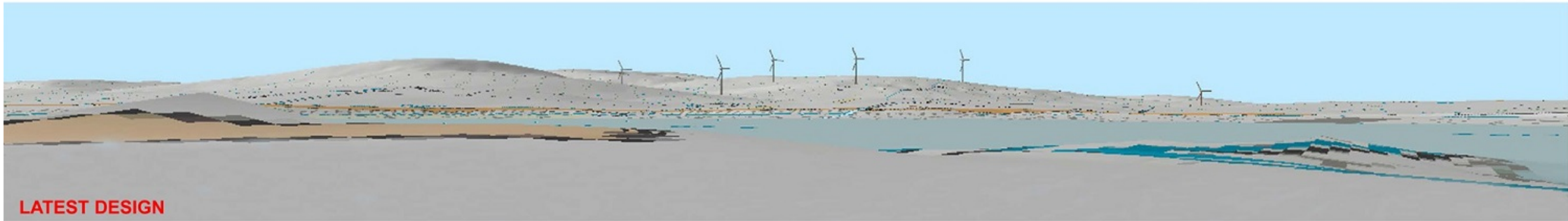


View to Hoy Wind Farm from Lyrawa Hill



Latest design December 2018

View to Hoy Wind Farm from Longhope pier



Turbine Tip Height 150m Turbine Hub Height 92m

View to Hoy Wind Farm from Lyness pier



Turbine Tip Height 150m Turbine Hub Height 92m

View to Hoy Wind Farm from Lyrawa Hill



Turbine Tip Height 150m Turbine Hub Height 92m

Your feedback – opportunities identified by the community

“This is not a question of whether we want a wind farm on the island rather what we want our island to be like in 10, 50, 100 years down the line. Do we want it simply to be a nice place for people to retire to and for tourists to enjoy in the summer months or do we want to try to build the most prosperous island we can out of our resources?”

“Well paying jobs that bring families and fill the school, new small businesses, an infrastructure that includes ferries that allows working on mainland even at weekends. The wind turbines will allow all this if it is handled with flair.”

“Something which would be good for the community would be to provide an off-road cycling path network. This would attract tourists and could be completed whilst construction of the wind turbine access tracks are made.”

“There is a wind turbine in Norfolk with a viewing platform that can be visited. If this project comes to pass and we are going to have 125m high turbines we should be making the most of it and thinking along those lines too. The views across the Flow and in all directions would be spectacular. And maybe jobs for local guides?”

What's happening next?

- Continue bird surveys
- Commence full Environmental Impact Assessment including the following studies:
 - Ecology and cultural heritage
 - Geology and hydrology
 - Noise and shadow flicker
 - Landscape and Visual
 - Traffic and access
 - Socio-economics and recreation
 - Aviation and telecommunication
- Undertake wind resource measurement
- Continue discussions with stakeholders
- Keep you updated on developments
- Re-design layout based on studies and feedback
- Explore options for delivery of community benefit