

Orkney Islands Council has a statutory duty to produce a plan with partners every 3 years to ensure adequate provision of CLD. This requirement affects all public, voluntary, third sector, private sector agencies and community partners who contribute to work supporting:

- **Improved life chances for people of all ages, through learning, personal development and active citizenship;** and
- **Stronger, more resilient, supportive, influential and inclusive communities**

Following wide-ranging consultation it was agreed to align our CLD Partners Plan to the priorities recently identified for the Orkney Community Planning Partnership Plan, ensuring the work of the Strategic Community Learning Group will compliment that of the Orkney Partnership.

The priority areas for the original CLD Partners Plan 2021-24 were:

- **Connectivity**
- **Sustainable Recovery**
- **Community Wellbeing**
- **Partnership Workforce Development and Planning**

This year the priority areas have been updated to align with the new Community Planning priorities:

- **Cost of Living**
- **Sustainable Development**
- **Local Equality**
- **Partnership Workforce Development and Planning**



How does this plan link to Community Planning?

The CLD Partners Plan 2021-24 will focus on elements of each of the Community Planning Partnership priorities, each underpinning the importance of using CLD approaches to help address and progress these important areas of work.



CLD Partners Plan Priority Actions 2021-24 (2023 update)

Sustainable Development:

- Support Community Organisations to identify need and investigate opportunities for developing Learning Hubs
- Raise awareness of and deliver training on the sexual exploitation of young people
- Delivery, in partnership, voluntary sector support to enhance community opportunities
- Increased coordination and expansion of adult learning opportunities and pathways, particularly for disadvantaged

Cost of Living:

- Deliver life skills and other support courses
- Influence the Cost-of-Living Taskforce to ensure best practice using CLD methods and approaches are used
- Increase SCLG support to the work of the Refugee Planning Group to ensure CLD approaches underpin outcome delivery

Local Equality:

- Ensure the continuous involvement of those with lesser heard voices and priority groups in matters affecting them
- Create a lived experience panel representing a range of learners & volunteers involved in CLD to influence the work of the SCLG
- Coordinate mental health awareness training to upskill the community, reduce stigma and increase understanding
- Investigate collaborative approaches and opportunities to expand social prescribing across Orkney
- Wider promotion of the values of volunteering to health, wellbeing and to the community including the Islands Games
- Work collaboratively with Community Planning to develop priorities & deliver wellbeing and learning opportunities

Partnership Workforce Development:

- Explore and expand opportunities and pathways into CLD
- Create & deliver a suite of training for the CLD workforce
- Improve methods for collaborative data collection

What is the CLD Partners Plan?

Orkney CLD Partners Plan is created by the Strategic Community Learning Group, through working with learners and communities. It help partners; plan together, avoid duplication, strengthen coordination and improve understanding of community needs.



Unmet Needs 2021-24

At a time of changing policies, priorities and resources, it is clear that not all CLD needs can be met during the lifetime of this plan. Identified areas of unmet needs include:

Development of wider accreditation opportunities for adults

Widening STEM opportunities through CLD activity

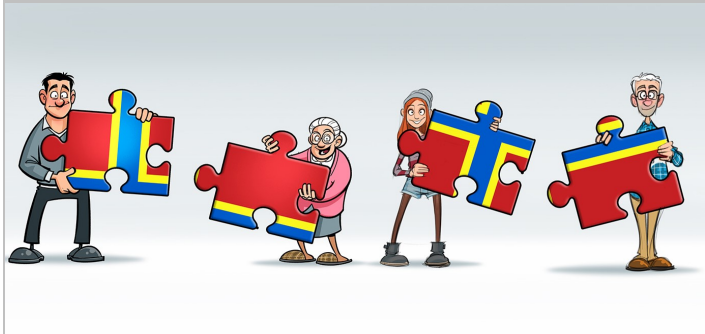
Undertake a Third Sector Skills Survey

While we have been unable to include specific actions in the plan around climate challenge engagement work to raise awareness and support within the community, we will seek opportunities to weave this into actions where possible/appropriate

Expanding partnership work with housing partners to explore preventative work around homelessness with young people

Develop closer links with partners leading on transport and broadband improvements to ensure barriers to participation in learning are reduced

Identifying resources to fund individual professional qualifications and wider course opportunities for staff within the CLD sector



If you would like further information on the Orkney CLD Partners Plan, the work of the Strategic Community Learning Group or if you would like to get involved please contact Kerry Spence on 873535 ext. 2425 or email kerry.spence@orkney.gov.uk

Want to know more?

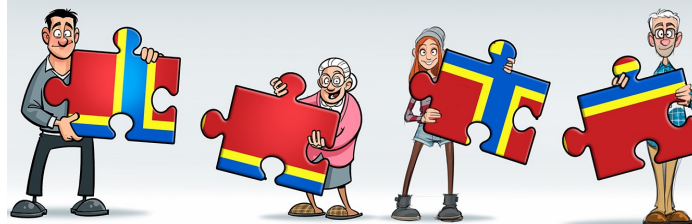
A full copy of the CLD Partners Plan 2021-24 can be found at:

www.orkney.gov.uk/CLD-Plan



You can also pick up a copy from various locations including:

Orkney Islands Council Customer Services, your local library or contact the CLD Team at Orkney Islands Council on 873535 ext. 2425.



Community Learning & Development Partners Plan 2021—2024 (2023 update)

Orkney's 3 year partnership plan for Community Learning and Development (CLD) is produced by Orkney's Strategic Community Learning Group (SCLG), a partnership of both private and third sector organisations who are delivering CLD support and activities across Orkney.

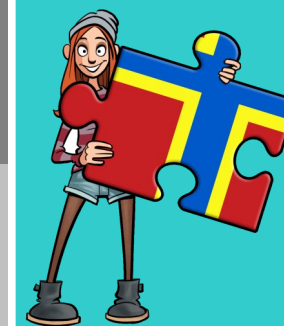
The CLD Partners Plan 2021-24 sets out how we will deliver CLD across Orkney over this 3 year period, ensuring services are planned for and delivered in a joined up way.

Community learning and development (CLD) covers a broad range of practice including youth work, adult learning, family learning, volunteer and community development.

This plan supports and develops the shared mission set out in the Orkney Community Plan and incorporated Local Outcomes Improvement Plan of:

'Working together for a better Orkney'.

What is Community Learning and Development (CLD)?



CLD is a way of working with individuals and communities which helps support individuals and groups to address issues of importance to them and promotes learning and social development.